



medical **ECONET**
GERMANY



EXCELLUS

Gold standard Half body DXA with FAN Beam Technology

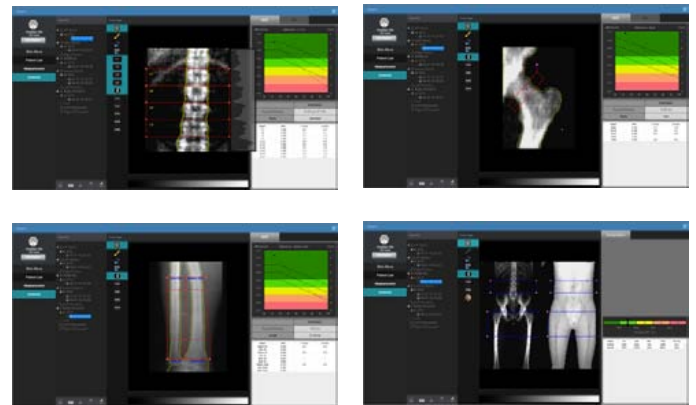
- Very High precision with fast scan at 19 sec. scan-time (femur)
- Scan site: Half body, AP spine, Femur (Dual femur), Forearm, Lateral spine, LVA
- Orthopedics function – periprosthetic bone density analysis
- Pediatrics – analysis of pediatric BMD
- B-Scope (body-scope): FAT, LEAN, FAT%
- FRAX (Fracture Risk Assessment in 10 years)
- Color mapping: RCM, BCM, OCM
- DICOM & PACS
- Rotatable arm (table can be used for ultrasound exams)
- Low radiation dose
- Dimensions and weight: 190 x 80 x 123cm, 160kgs

Specifications

Scan Type	FAN Beam
Scan Time	AP spine (35 ± 2 sec (Standard Mode)) Femur (20 ± 2sec (Standard Mode)) Forearm (18 ± 2sec) HalfBody (240 sec) Lateral Spine (45 ± 2sec) LVA (210 ± 2sec)
Analysis	BMD, T-score, Z-score, BMI, Body composition (FAT, LEAN, BMC)
Pediatric function	included
Orthopedic function	included
FRAX	included
Measuring method	Non-stop-scan (Spine, Dual Femur)
Region of Interest	AUTO ROI
Radiation dose	0.1 mSv / time interval
Database	Restore, backup, import, export
Scan area	Half body: 44.8 x 16cm Femur: 12 x 5.6cm Spine: 16 x 6.4cm
Dimensions	190 x 80 x 123 cm
Weight	160 kgs
Environment	Operation: 10 ~ 40°C Optimal humidity: 30 ~ 75% Optimal pressure: 700 ~ 1060 kPa Storage Temperature: -5 ~ 50°C Storage humidity: 0 ~ 90%
Operation System	Windows 7, 8, 10
DICOM / PACS	included
Detector	CZT (Cadmiumzinktellurid)



Software



Dimensions

190 x 80 x 123 cm, circa 160 kgs



CE 0120



Im Erlengrund 20, 46149 Oberhausen - Germany

t: +49 (0) 208 377 890-0 info@medical-econet.com
f: +49 (0) 208 377 890-55 www.medical-econet.com
facebook.com/medicaleconetgermany
twitter.com/medicaleconet

Distributor

*All specifications are subject to change without notice.